



Cargo bike tent

Alle onderdelen van de tent.

All Parts for the Tent:

Het bevestigingsmateriaal, Parts:

1 Blokje hout,	1 Woodblock,
2 Schroeven,	2 Screws,
2 Kunststof ringen,	2 Plastic ring,
2 Drukkers,	2 Snap button,
4 Korte schroeven,	4 Short screws,
2 Elastieken,	2 Elastic strap,
2 Rubbers,	2 Rubber hose,

De plaatsing van het blokje in het midden.

Position of the woodblock in the middle.

Vastschroeven van het blokje ca. 15 mm onder de rand.

Screw the woodblock on 15 mm from the edge.

Zet de tent in de bak.

Place the tent in the box.

Om de gebogen zeillat komt aan beide kanten een rubber, deze steunt op het bankje.

On each side of the bended fiber rail the rubber hose is added. This rail leans on the bench.





De voorste zeillat steunt op het blokje.
The front fiber rail leans on the woodblock.



Houdt de voorkant van de tent netjes om de bak.
Keep the front of the tent around the box.



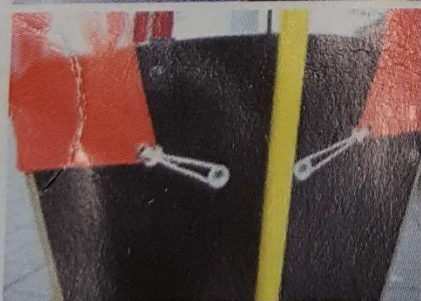
Teken de drukknoop aan de voorkant af.
Draw the position of the snap button on the front



Schroef de drukkers vast.
Screw the push brackets on the box.



Trek de tent om de achterkant van de bak.
Pull the tent straight on the rear.



Schroef de elastiekhouders op de bak.
Screw the strapholders on the box.

Instructions for a canopy with an aluminum pole:

For a canopy with an aluminum pole, a metal bracket is used to support the pole instead of the wooden block. The manufacturer suggests this bracket should be mounted directly to the box in the same position as the wooden block, 15mm down from the top of the box.

It appears that the pole may not fit into the bracket when the bracket is mounted directly to the box. It is possible to move the bracket further away from the box using two wooden blocks. The top of the bracket should still be about 15mm below the top of the box. The wooden blocks will need to be positioned accordingly. The size of holes in the metal bracket necessitates the use of larger screws with big heads.



This photo shows the suggested method of mounting the bracket on two wooden blocks. There should be pilot holes drilled into the center of the blocks (not shown in this picture).