

West-end Bikeways: Call for Submissions

(Deadline November 5, 2008)

Do you live in the downtown west-end in the area bounded by Bloor and the Gardiner, from Keele to Bathurst? Do you ride a bicycle? If you answered yes, we want to hear from you!

In partnership with the Toronto Cyclists Union, the City of Toronto is seeking your ideas on bikeway projects for west-end Toronto. **We are looking for quick fixes that can be built in 2009-2010**, so please keep in mind potential hurdles associated with your suggestions.

The west-end challenge:

Currently, there is a “black hole” in the bikeway network in the downtown west-side. Street car tracks on east-west arteries, disjointed local streets, and railway corridors all pose challenges to accommodating bikeways.

We want your help to identify potential bikeways to be designed and implemented in 2009 and 2010. We’re not just talking bike lanes – we’re looking for new ideas that respond to the specific challenges in the west-end.

Submit your west-end bikeway suggestions:

Text or visual submissions are welcome. Draw over the study area map on the back of this page, or whatever other material you like, and send it in to us. Or write your suggestions down in 300 words or less. Your brevity ensures submissions can be processed in a timely manner.

Send your submissions by email, fax or mail to:

Email: bikeplan@toronto.ca

Fax: 416-392-0071

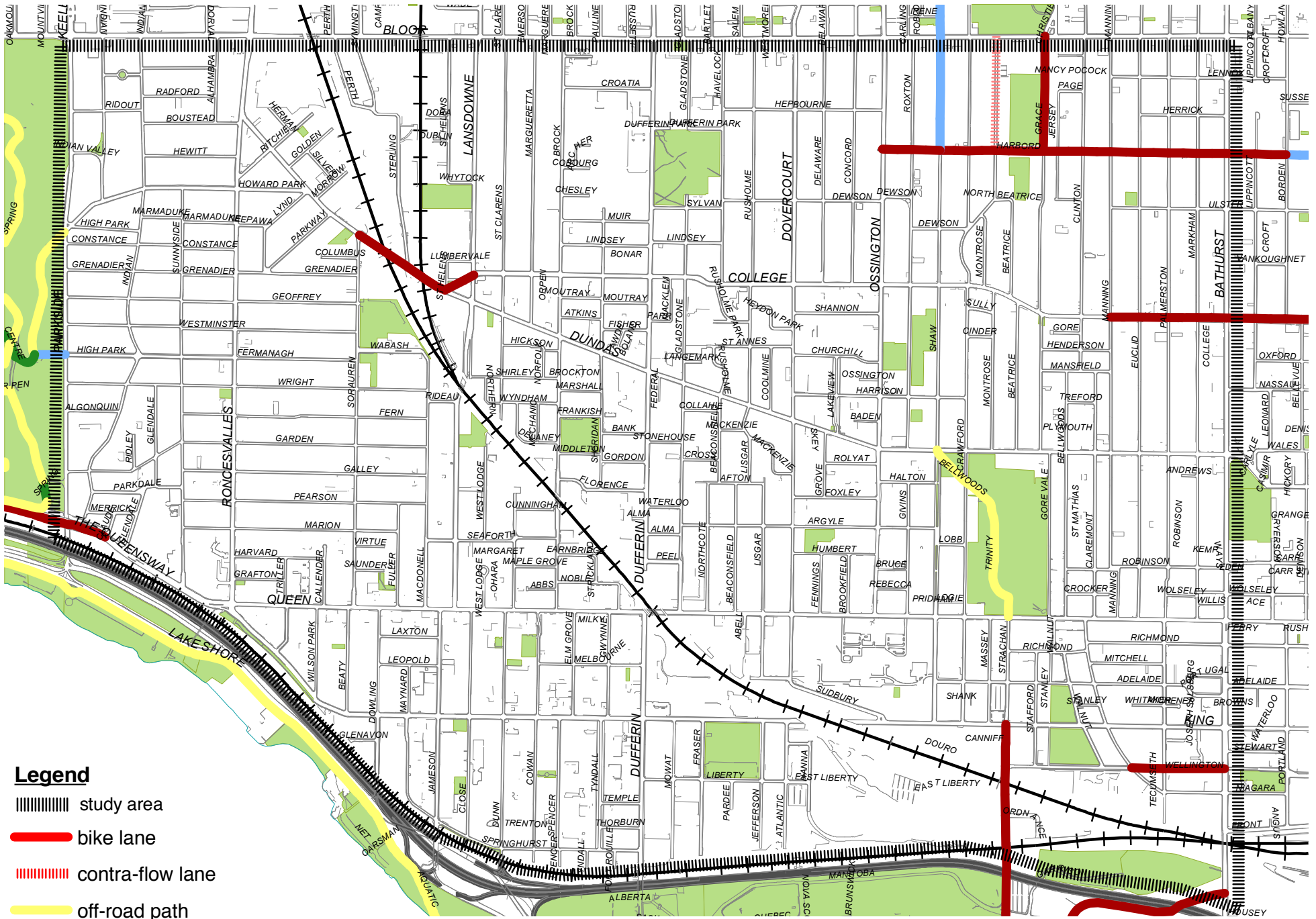
Please specify “West-end Bikeways” in the subject line for emails and faxes.

Mail: Attn: West-end Bikeways
850 Coxwell Ave. 1st Floor
Toronto ON, M4C 5R1







All submissions must be received by **Wednesday November 5th, 2008**

Thank-you in advance for your participation. All submissions will be reviewed by City of Toronto Transportation Services and the Toronto Cyclists Union in cooperation with the west-end community. Selected bikeway projects will be announced in Winter 2009. For more information please visit: www.toronto.ca/cycling/public-consultations





Legend

-  study area
-  bike lane
-  contra-flow lane
-  off-road path
-  park road
-  shared roadway

West-end Bikeways Study Area

